



Impacts of Covid-19 on delivery of EPH Services within PAGC Communities

Prepared by: Mohamad ElRafihi

Environmental Public Health Supervisor, PAGC

Date: February 18, 2021

PAGC EH Team

- ▶ Mohamad ElRafihi - Environmental Health Supervisor --Joined PAGC on November 1, 2014.
- ▶ Tahir Muhammad - Environmental Health Officer --joined PAGC on April 07, 2008.
- ▶ Nitin Koli - Environmental Health Officer --Joined PAGC on June 24, 2013.
- ▶ Crystal Bull - Environmental Health Officer --worked for PAGC from October 2019-December 2020.
- ▶ Farman Amrao -Environmental Health Officer --joined PAGC on February 1, 2017.
- ▶ EPHOs Practicum students- Shamima Sajjad
- ▶ Climate Change Coordinator -Pragati Patel

Delivery of EPH Program and Services

- ▶ Drinking Water Safety
- ▶ Food Safety
- ▶ Communicable disease control -covid-19
- ▶ Housing
- ▶ Facilities inspections
- ▶ Wastewater and solid waste management
- ▶ Climate change
- ▶ Environmental contaminants -radon project



Challenges with service delivery

- ▶ Since the declaration of pandemic and for at least four months we were unable to travel to our communities due to lockdown in our communities.
- ▶ During this period we worked from home.
- ▶ Gradual transition from home to office environment around mid July 2020.
- ▶ Now, we are more involved in providing information about communicable diseases, infection control, environmental cleaning and disinfection guidelines and training.
- ▶ Follow up on non-compliance complaints with of PHOs with respect to breach of self-isolation, indoor gatherings, and inconsistent wearing of masks.

Changes in service delivery due to covid-19

- ▶ Reduced number of inspections and complaint investigations.
- ▶ Increase in number of virtual meetings hosted by various agencies.
- ▶ Increased awareness around public health protection measures including indoor gatherings, masking, social distancing, hand washing, and increased frequency of cleaning and disinfection.
- ▶ Increased awareness around covid-19 guidelines with respect to funerals and wakes, indoor gatherings, masking, cleaning and disinfection requirements.
- ▶ Increased awareness around operation and management of facilities such as child care facilities, grocery stores, schools, health centres in light of covid-19.

Water Quality Monitoring

- ▶ When COVID-19 started affecting our communities in March 2020 the water quality monitoring started to decrease.
- ▶ Water quality monitoring program is also affected by COVID-19 as WQ Monitors were unable to take water samples from the houses on truck water and well water.
- ▶ The water quality monitors were not able to visit as many places as they normal do. This is still the situation in my communities.
- ▶ Also due to COVID-19 some water quality monitors had to self isolate for a period of 14 days.

Water Quality Monitoring

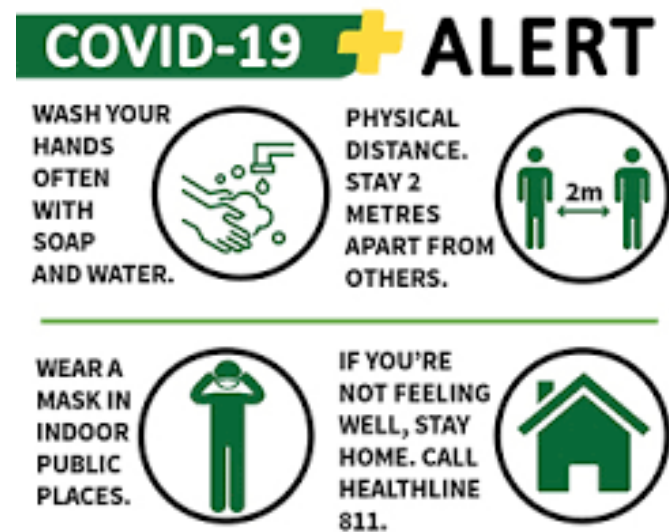
- ▶ Some senior WQ Monitors couldn't continue work from their offices and they were unable to do water quality monitoring. We had to make alternate arrangements for water sampling in those communities.
- ▶ In some communities WQM were found close contacts and went on mandatory isolation.
- ▶ Lack of communication between WQM and EPH (they did not inform EPHOs that they are in isolation and unable to take water samples).
- ▶ WQM sent reports in batches.
- ▶ Delays in new WQM trainings due to community lockdowns and travel restrictions.

Food Safety

- ▶ The number of people attending food safety courses has been drastically reduced due to COVID-19.
- ▶ Most of the courses have been held at the PAGC Health and Social Development building.
- ▶ The grocery stores in our communities have been taking all the precautions necessary to deal with the COVID-19 situation.
- ▶ Fewer food safety course requests from communities as compared to normal.

Communicable Disease Control

- ▶ Communities have been provided with information relevant to COVID-19
- ▶ EPHOs more actively involved with non compliance issues of Public Health Orders.



Housing

- ▶ The requests for housing inspections have decreased due to COVID-19.
- ▶ Requests due to mould, pest infestation, water/moisture damage and other indoor air quality complaints continue to be received and addressed on an ongoing basis

Facilities inspections

- ▶ Due to COVID-19 it has not been possible to conduct the regular number of public health inspections. For certain northern communities flights have frequently been cancelled.
- ▶ There was also difficulty accessing public buildings e.g. closed, employees on isolation, access refusals.
- ▶ Covid-19 guidelines specific to facilities have been shared with operators of child care facilities, group homes, long term care facilities, grocery stores and other public buildings and facilities.

Wastewater and solid waste management

- ▶ This has remained the same since COVID-19 began.
- ▶ There have been no major issues with wastewater or solid waste management.
- ▶ Follow up on sewage spills and concerns with lift stations.



Training

- ▶ Before COVID-19, we were able to provide safe food handling and WHMIS training to large group of people but now we can't accommodate more than ten people in a class.
- ▶ training for courses such as WHMIS have been reduced due to COVID-19.
- ▶ Requests for Environmental Cleaning training courses.
- ▶ web or online training was not the preference of the training organizers, they wanted in person group trainings for food safety and WHMIS.
- ▶ less training requests form communities than last years.

Emergency preparedness

- ▶ Since COVID-19 began there has been no direct involvement with emergency situations.
- ▶ Climate change meetings were held at the beginning of the year with communities that received funding for climate change adaptation projects.



Environmental contaminants

- ▶ Radon project activities were carried out during this period such as collection of radon dosimeters from all public buildings and residences in RECN.
- ▶ Surveys and other school planned project activities are planned to be carried out in consultation with project coordinator.

Partners

- ▶ NITHA
- ▶ FNIHB -Indigenous Services Canada
- ▶ Saskatchewan Health Authority
- ▶ Government of Saskatchewan
- ▶ Population Health Unit -La Ronge
- ▶ PAGC Health staff

Covid-19 Resources

- ▶ <http://skfn.ca/coronavirus-information-for-for-community/>
- ▶ <https://www.saskatchewan.ca/government/health-care-administration-and-provider-resources/treatment-procedures-and-guidelines/emerging-public-health-issues/2019-novel-coronavirus/public-health-measures>
- ▶ <https://www.saskatchewan.ca/government/health-care-administration-and-provider-resources/treatment-procedures-and-guidelines/emerging-public-health-issues/2019-novel-coronavirus/re-open-saskatchewan-plan>



THANK YOU!

Questions

