

DataStream

Advancing collaborative water stewardship

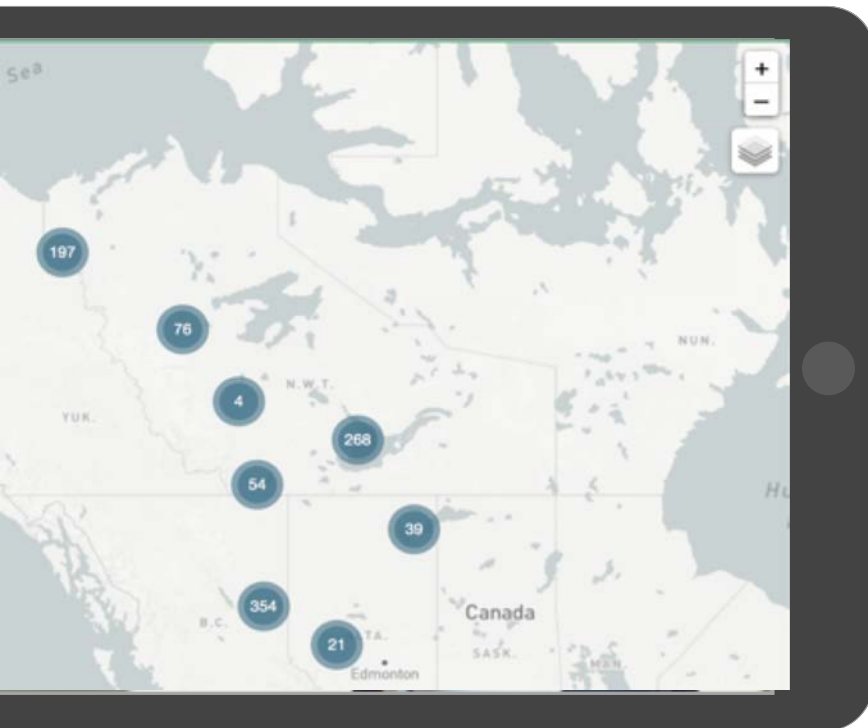


Carolyn DuBois
Water Program Director
The Gordon Foundation

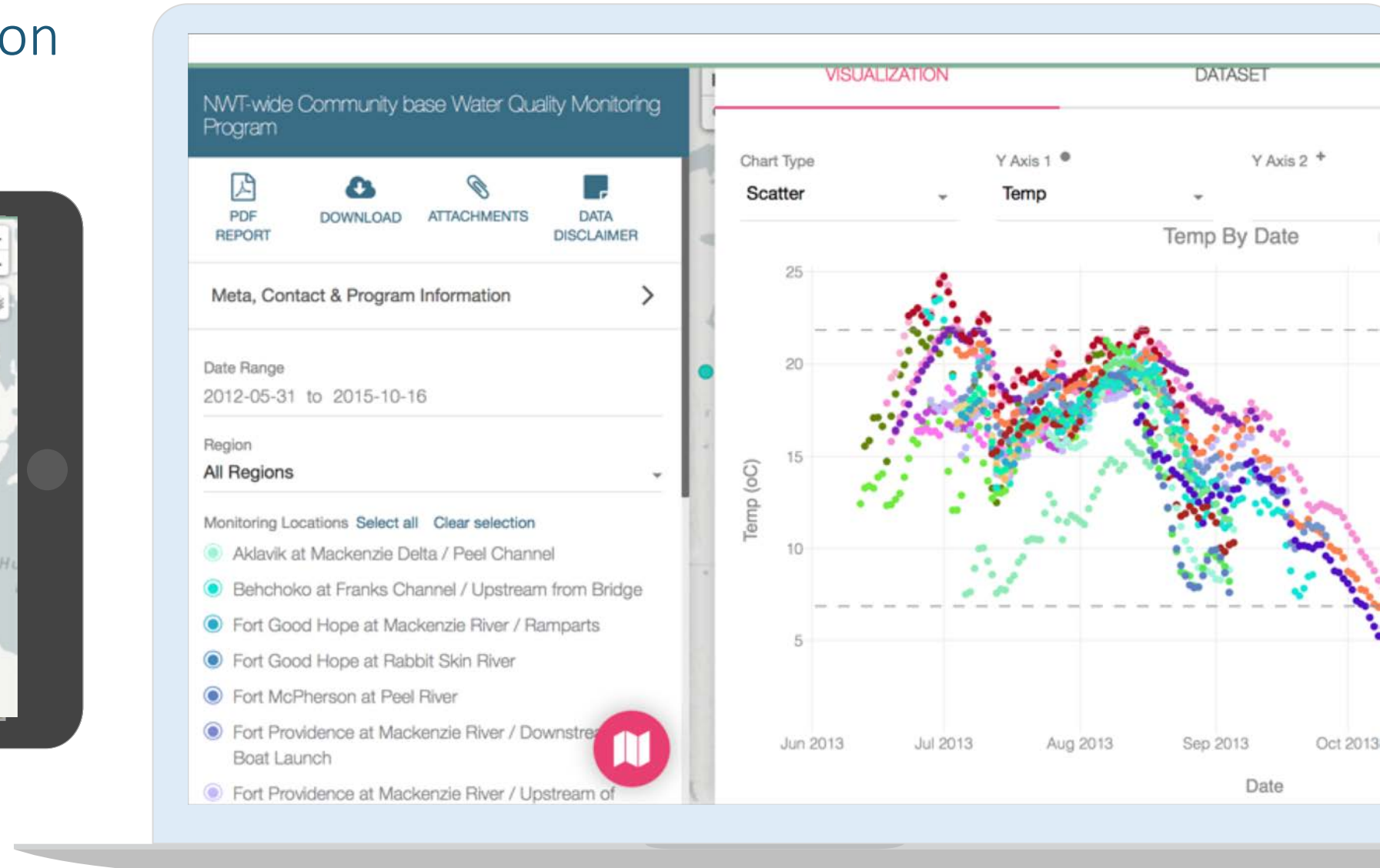
Lindsay Day
DataStream Coordinator
The Gordon Foundation

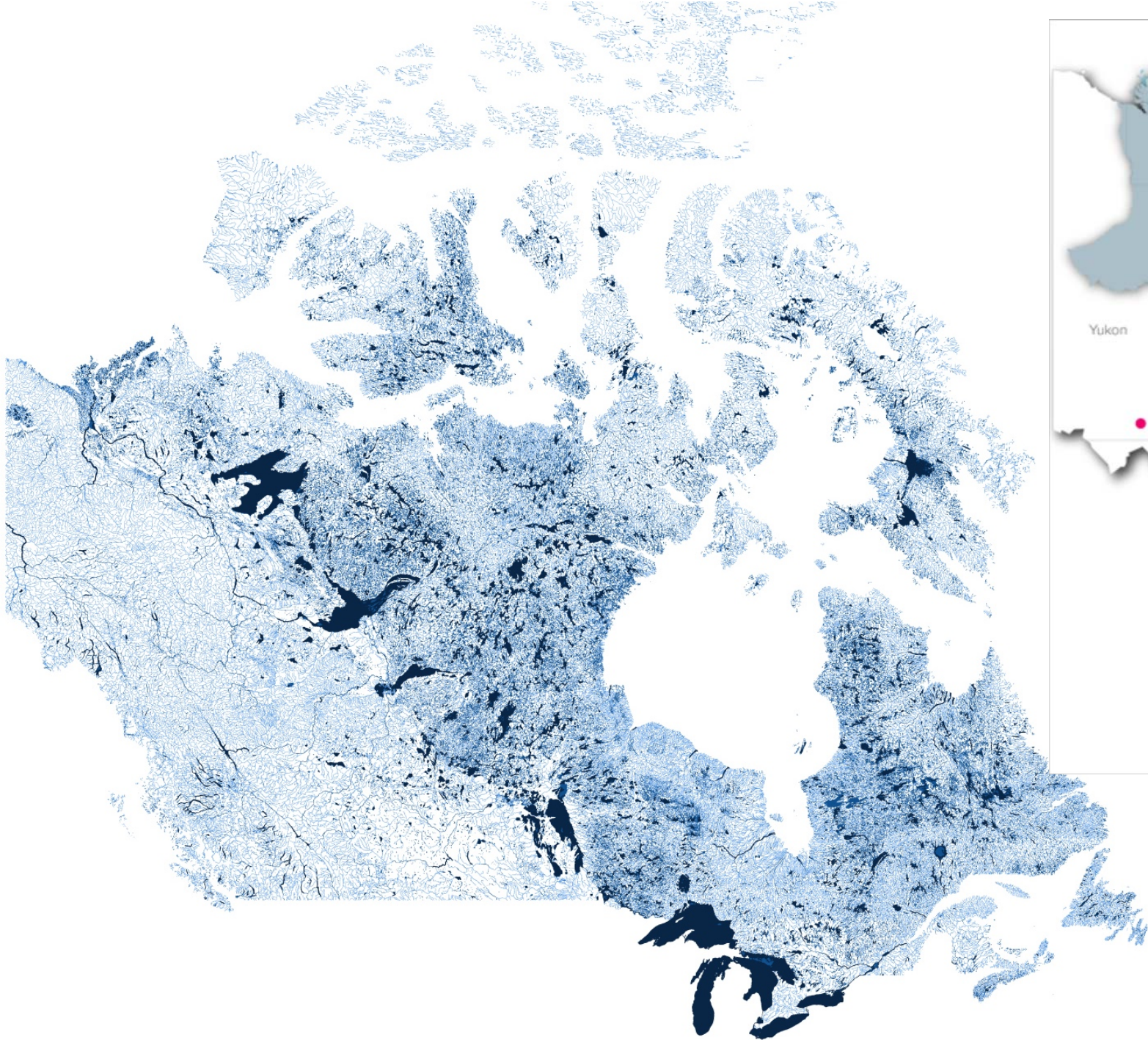
ti • káedîle • imaq • ta • ᐃᐱᐱᐱ • nîpîy • ni'pe • Eau • tu • chuu • Water • ΔL^{sb}
chuu • Water • ΔL^{sb} • ti • káedîle • imaq • ta • ᐃᐱᐱᐱ • ni'pe • Eau • tu • chuu • Water • ΔL^{sb}
ΔL^{sb} • ti • ni'pe • káedîle • imaq • ta • ᐃᐱᐱᐱ • ni'pe • Eau • tu • chuu • Water

An online platform for sharing information on freshwater health



→ Free and open for anyone to use





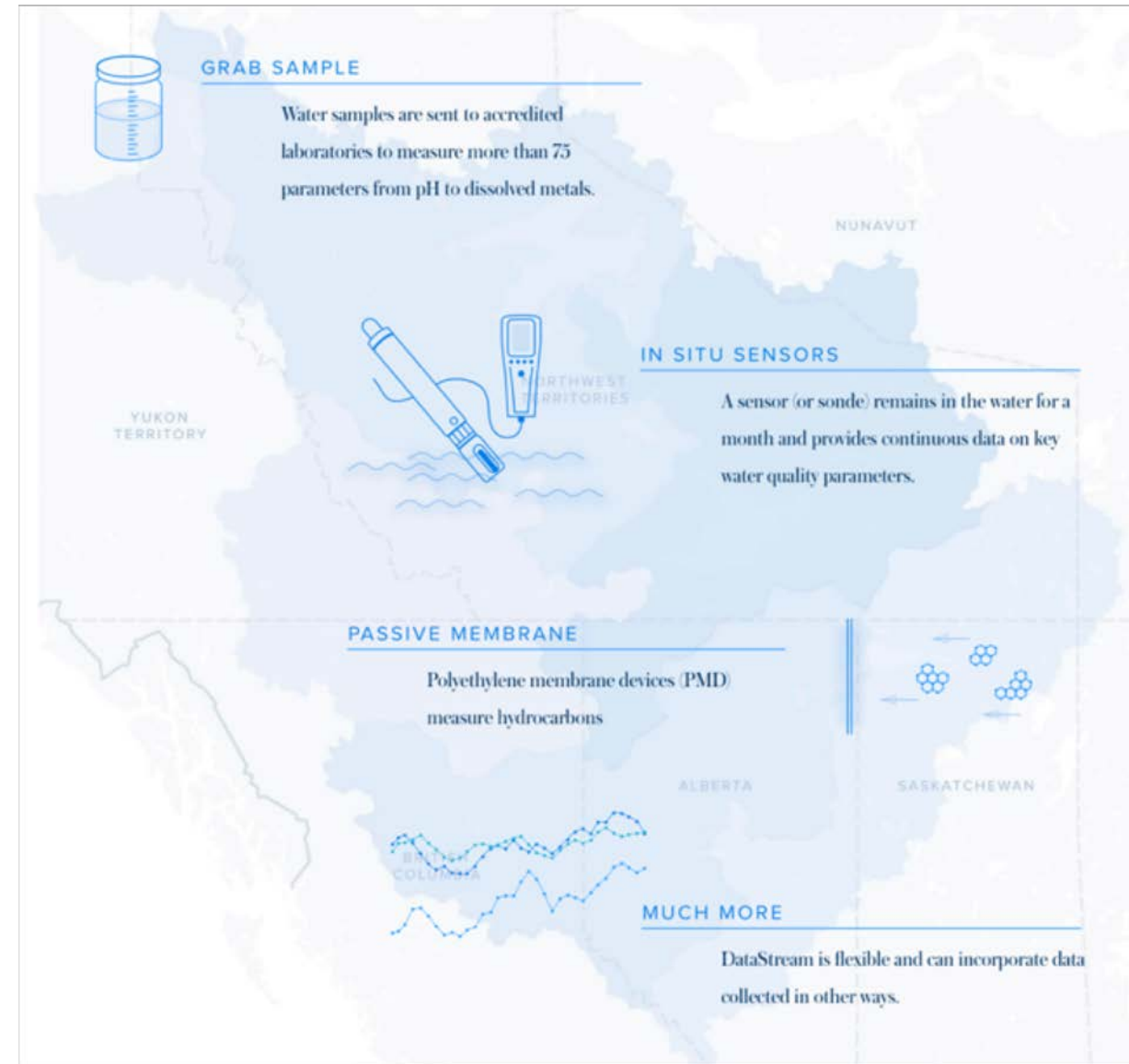
*"Water carries with it
the stories of where it
has been."*

Linda Hogan





Photo: Upper Athabasca Community Based Monitoring Program



- Western scientific water quality data only
- Communities control what they share

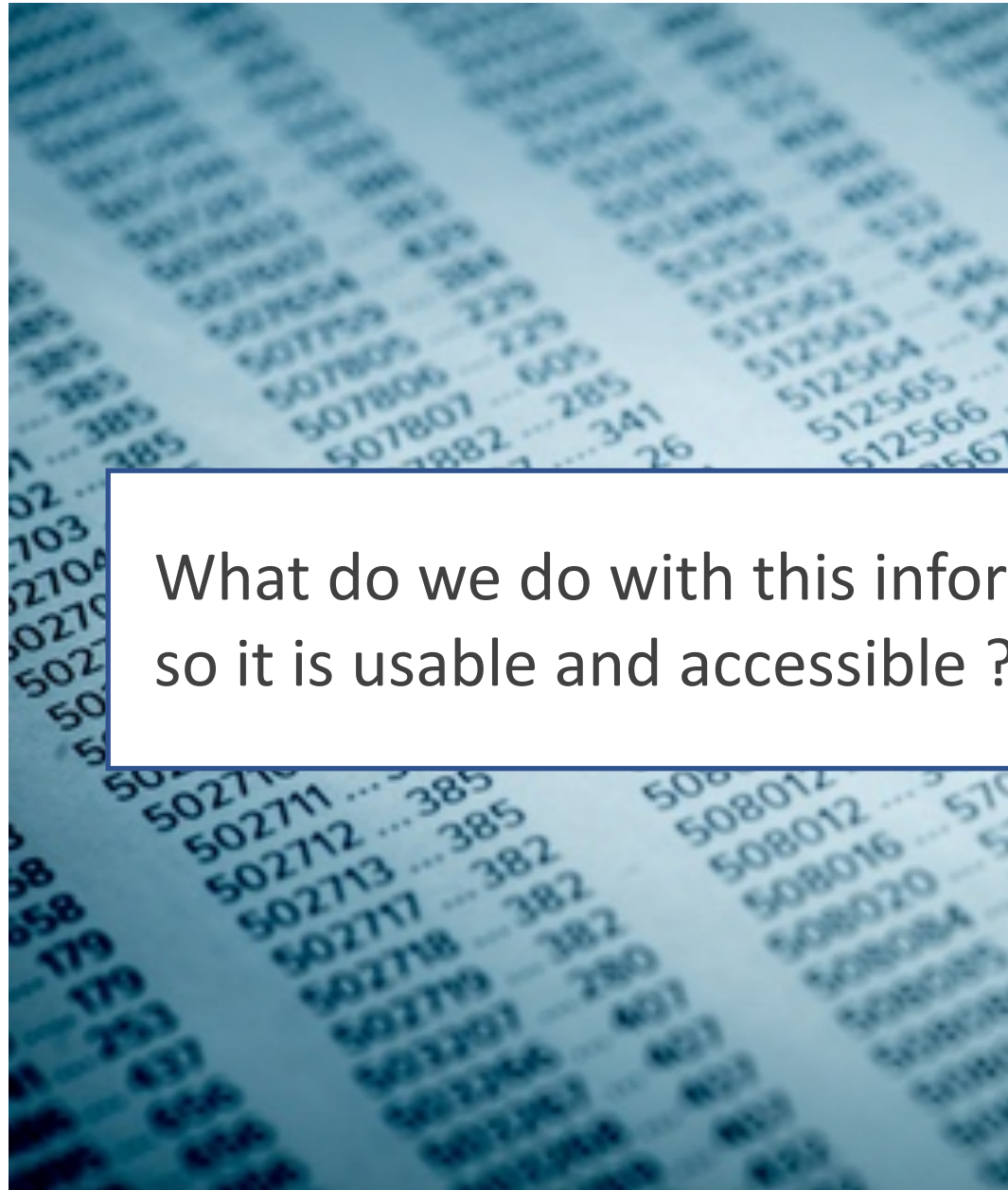
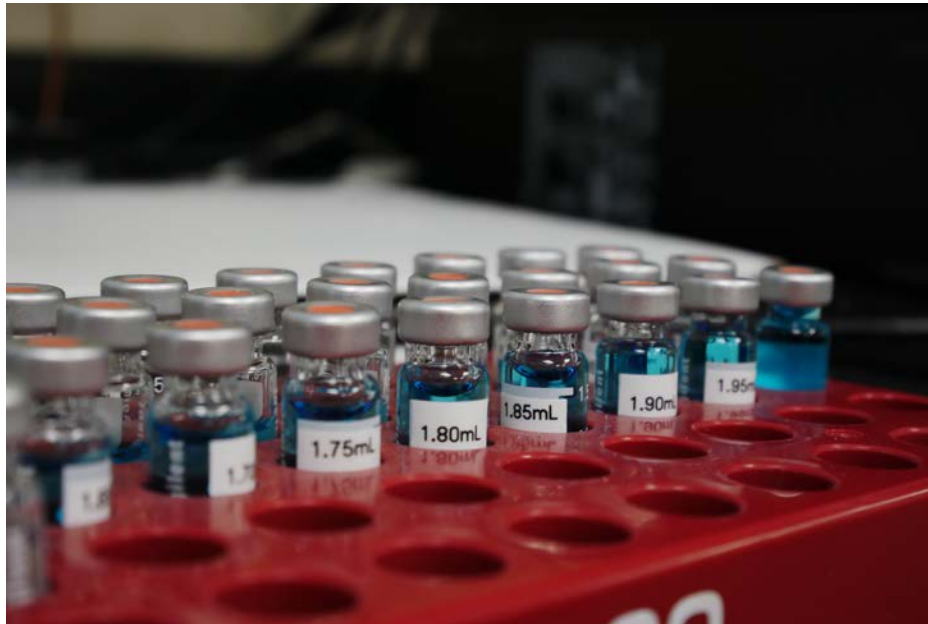
WHAT WE DO AND DON'T DO:

DO

- Provide a place to publish data online
- Training and support on data management

DO NOT

- Conduct or oversee any monitoring
- Own any water data on DataStream
- Interpret data



What do we do with this information so it is usable and accessible ?

Useful and usable data

- Accessible and Findable
- Complete metadata (information about the data)
- Consistent format

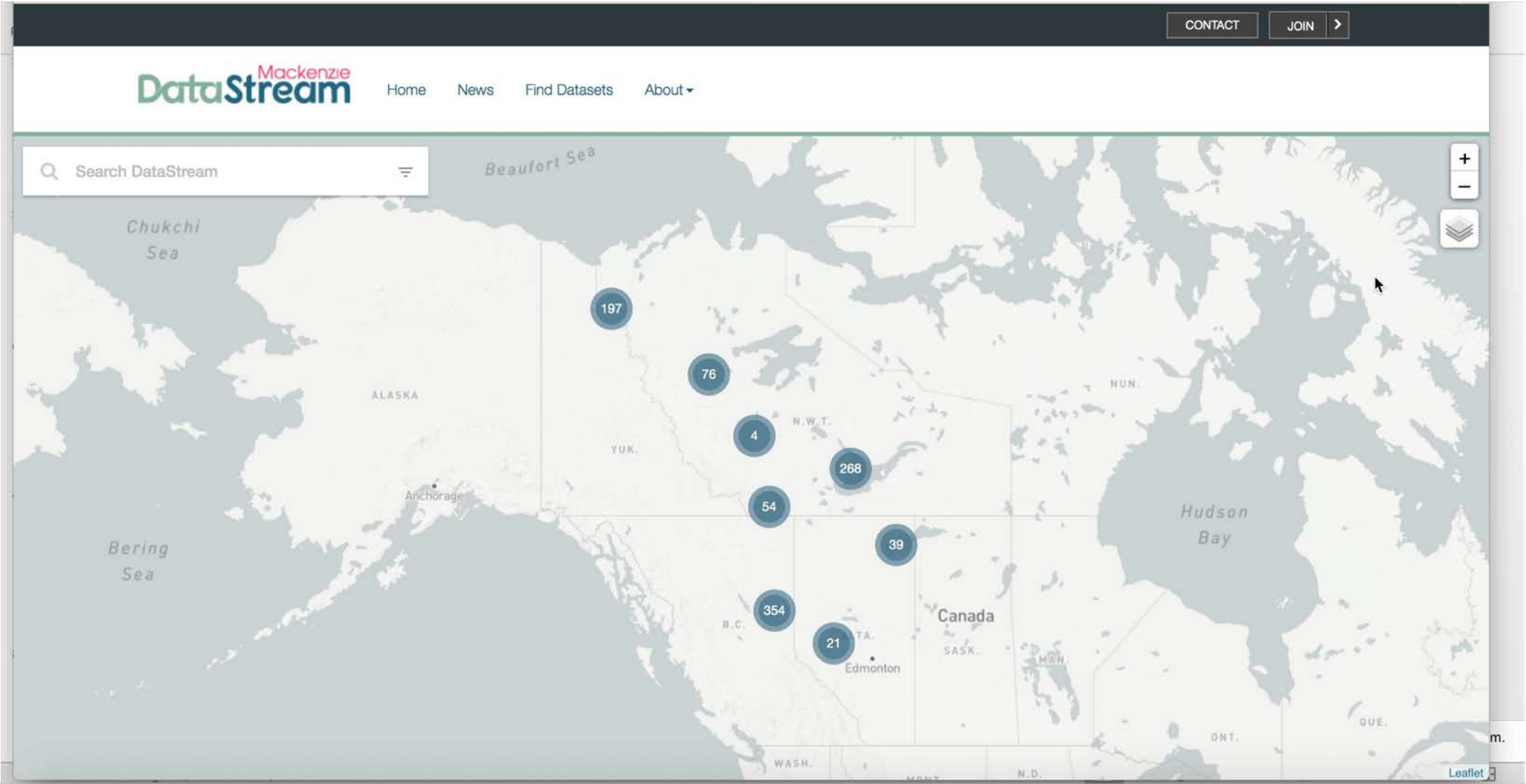


Monitoring Location

Sampling Details

Results

DATASTREAM DEMO:



www.AtlanticDataStream.ca

www.MackenzieDataStream.ca

[←](#)

NWT-wide Community-based Water Quality Monitoring Program

[DOWNLOAD](#)
[ATTACHMENTS](#)
[DATA DISCLAIMER](#)

[Meta, Contact & Program Information >](#)

Date Range

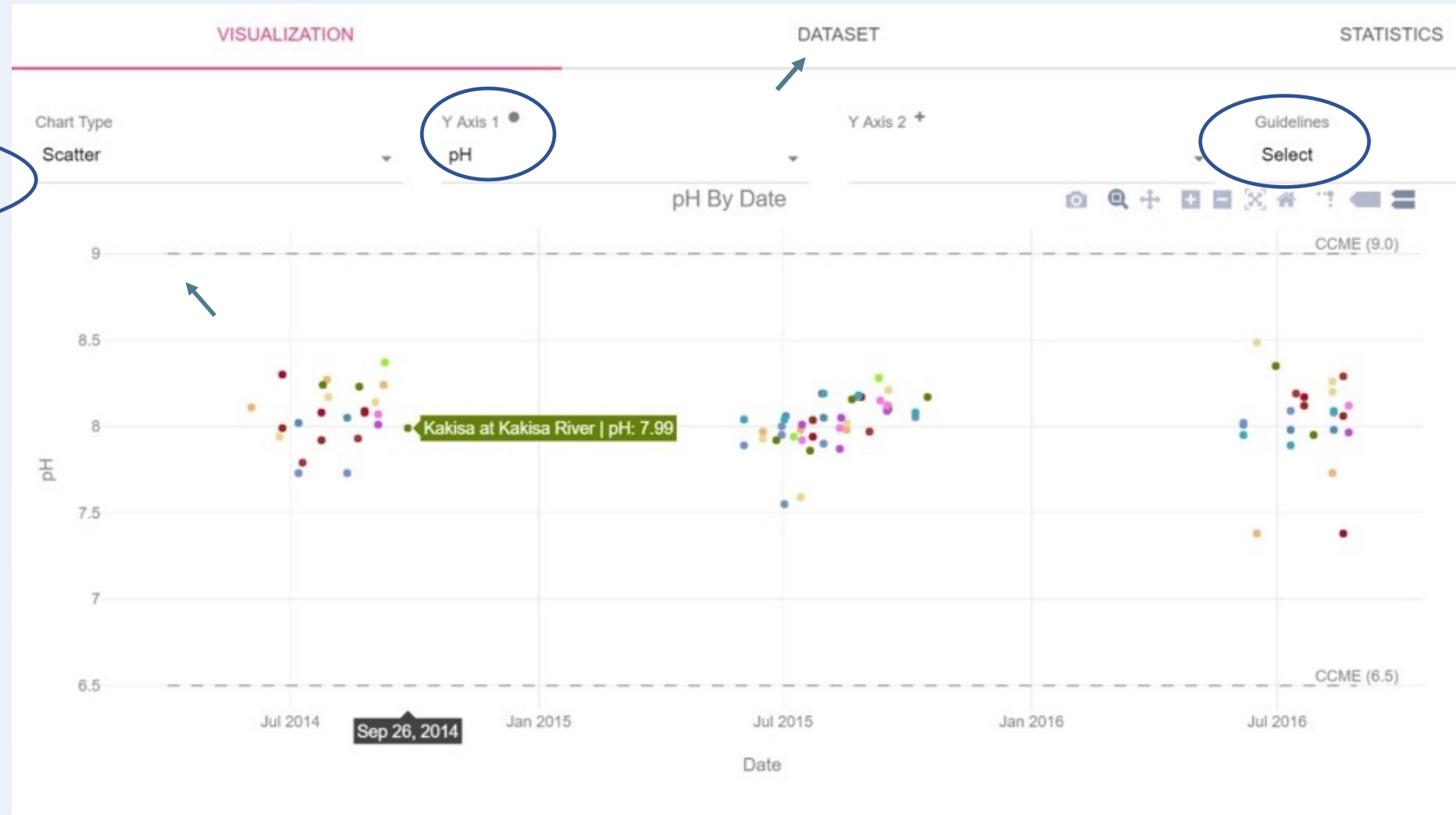
2014-04-01 to 2016-08-29

Region

Dehcho

Monitoring Locations [Select all](#)

- Fort Providence at Mackenzie River / Downstream of Boat Launch
- Fort Providence at Mackenzie River / Upstream of Bridge / West Side of Channel
- Fort Simpson at Liard River / Upstream of Ferry
- Fort Simpson at Mackenzie River / Upstream of Liard River Mouth
- Hay River at Hay River / Upstream of West Channel
- Hay River at Mouth of Hay River / Great Slave



Commitment to Continuous Platform-wide Improvement

2018 -Major software improvements

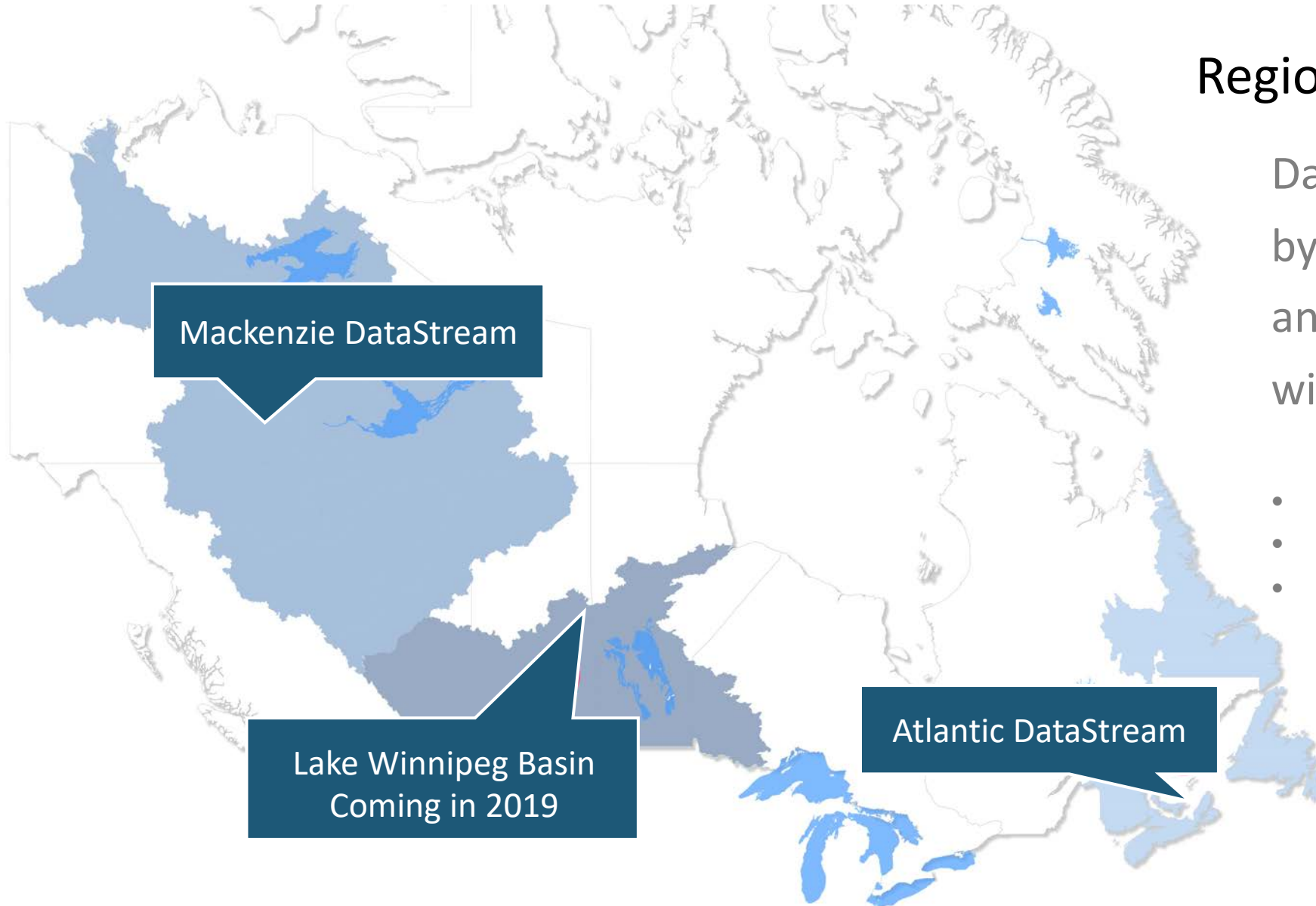
- Robust, internationally adopted data model (WQX)
- Focus on showcasing watershed groups and efforts (always interested in sharing more stories).
- Use of blockchain to provide transparent record of changes in datasets over time
- Capacity to handle larger datasets
-and much more....

DataStream

Regional partnership model

DataStream is led nationally by The Gordon Foundation and delivered in collaboration with regional partners

- Government of Northwest Territories
- Atlantic Water Network
- Lake Winnipeg Foundation



Where we are now

DataStream

47

Monitoring Groups

1,504,000+

Unique Observations

1,661

Monitoring Sites

Data-Policy Cycle

Where DataStream fits in





Positioning DataStream for Success and Sustainability

- Independent
- Neutral: Neither a data producer or data user (or the data police!)
- Program NOT a project- Continuously improving from a tech and programmatic standpoint
- Sustainable funds from the Foundation and use external funding to grow
- Cross-sectoral and transboundary relationship building
- Efficient, centralized operation of online platform while delivering in partnerships with regional partners

DISCUSSION:

- To share or not share?
- Now that you've learned about DataStream, is it something you would use? Why or why not?
- DataStream addresses one challenge. What are other challenges to making the most of information gathered through water monitoring programs?
- How is water quality data being used in your community now? What other ways could it be used?

Thank you!!



Carolyn DuBois

Carolyn@gordonfn.org

Lindsay Day

Lindsay@gordonfn.org

@DataStreamH2O